

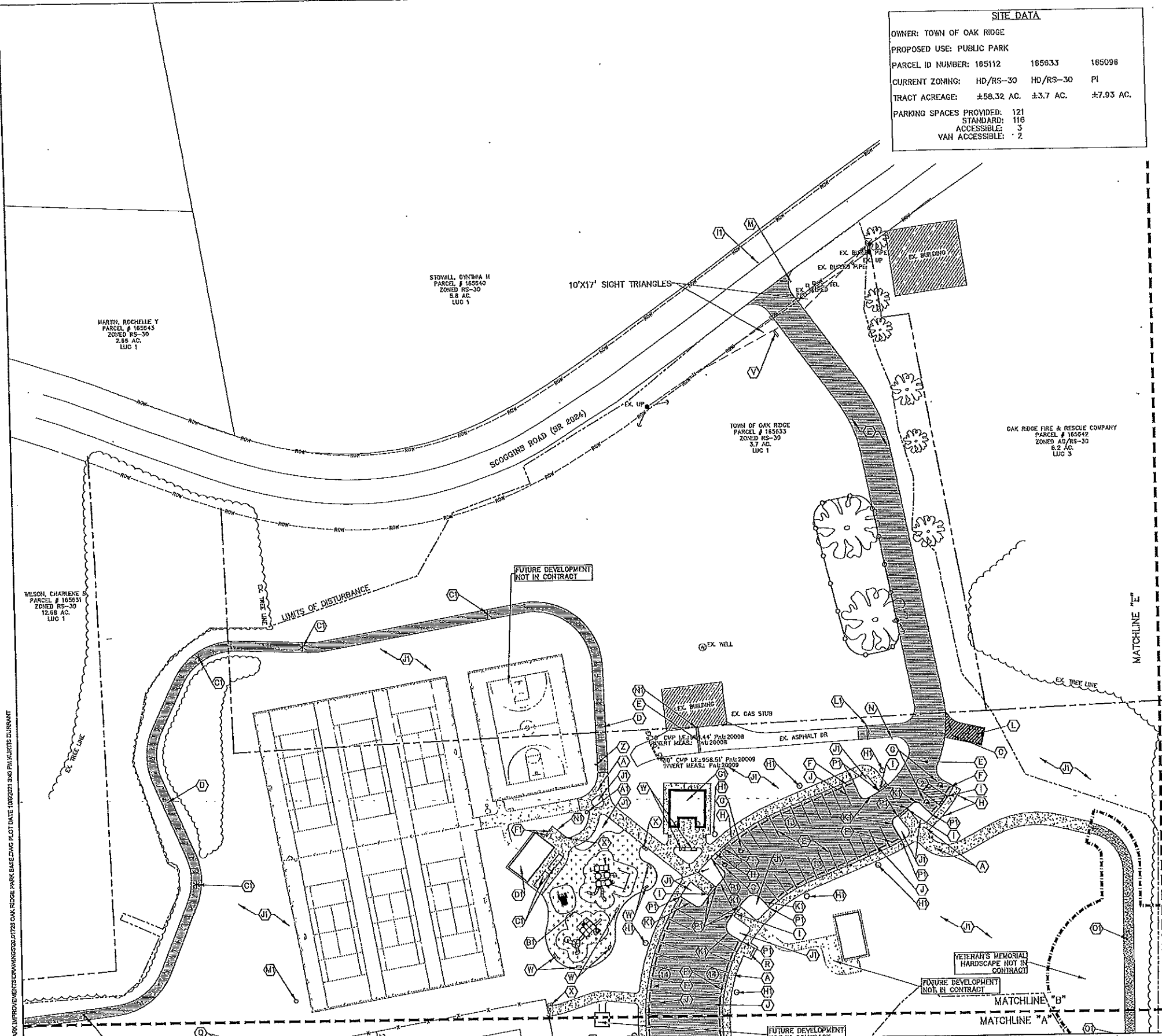
SITE DATA		
OWNER:	TOWN OF OAK RIDGE	
PROPOSED USE:	PUBLIC PARK	
PARCEL ID NUMBER:	165112	165096
CURRENT ZONING:	HD/RS-30	HD/RS-30 PI
TRACT ACREAGE:	±58.32 AC.	±3.7 AC. ±7.93 AC.
PARKING SPACES PROVIDED:	121	
STANDARD:	116	
ACCESSIBLE:	3	
VAN ACCESSIBLE:	2	

**GENERAL NOTES:**

- ALL EXISTING CONDITIONS AND TOPOGRAPHIC INFORMATION WAS OBTAINED FROM SURVEY FROM MCGILL ASSOCIATES, DATED APRIL 7, 2021.
- ALL DEVELOPMENT SHALL CONFORM WITH THE TOWN OF OAK RIDGE DEVELOPMENT ORDINANCE.
- SITE SIGNAGE SHALL CONFORM WITH APPLICABLE CODES AND ORDINANCES.
- ALL DIMENSIONS ARE FACE OF CURB, EDGE OF PAVEMENT AND FACE OF WALL, UNLESS OTHERWISE NOTED.
- THIS SITE IS NOT LOCATED IN ANY FLOOD ZONE.
- ALL IMPROVEMENTS AND CONSTRUCTION SHALL BE IN ACCORDANCE WITH NORTH CAROLINA STATE STANDARDS. ALL IMPROVEMENTS SHALL COMPLY WITH THE TOWN OF OAK RIDGE STANDARDS FOR STORM DRAINAGE, SIGNAGE, LANDSCAPE, PLANTING, UTILITY AND PARKING REQUIREMENTS.
- ANY DISCREPANCIES FOUND IN THE FIELD SHALL BE CALLED TO THE ATTENTION OF THE OWNER/ENGINEER/DESIGNER PRIOR TO PROCEEDING WITH ANY WORK.
- THE GENERAL CONTRACTOR SHALL CONTACT ALL OWNERS OF EASEMENTS, UTILITIES AND RIGHT OF WAYS, PUBLIC OR PRIVATE, PRIOR TO WORKING IN THESE AREAS.
- HATCHING OF HARD SURFACE MATERIALS SUCH AS BRICK AND CONCRETE ARE FOR GENERAL INFORMATION PURPOSES. IN NO INSTANCE IS A UTILITY LID, COVER OR ACCESS POINT TO BE COVERED OVER AND CONCEALED BY THE PROPOSED SURFACE MATERIAL. ANY HIDDEN UTILITY BOXES, COVERS, ETC DISCOVERED DURING CONSTRUCTION SHALL BE ADJUSTED TO MATCH PROPOSED GRADE ELEVATIONS.

**KEY NOTES**

- (A) 4" CONCRETE SIDEWALK. SEE DETAIL SHEET C-505.
- (B) MATCH EXISTING SIDEWALK WITH SMOOTH TRANSITION, USE CONSTRUCTION JOINT AT INTERFACE OF EXISTING AND PROPOSED SIDEWALKS.
- (C) 6" CONCRETE PAVEMENT. SEE DETAIL SHEET C-505.
- (D) ASPHALT TRAIL. SEE DETAIL SHEET C-506.
- (E) ASPHALT. SEE DETAIL SHEET C-505.
- (F) CONCRETE WHEELSTOP. SEE DETAIL SHEET C-505.
- (G) HC PARKING SPACE. SEE DETAIL SHEET C-505.
- (H) HC PARKING SIGN. SEE DETAIL SHEET C-505.
- (I) DETECTABLE WARNING PLATE, BLACK POWDERCOAT FINISH. SEE DETAIL SHEET C-505.
- (J) 4" WHITE PAINT STRIPE.
- (K) TRAFFIC ARROWS AND SYMBOLS. SEE DETAIL SHEET C-505.
- (L) DUMPSTER ENCLOSURE. SEE DETAIL SHEET C-505.
- (M) STOP SIGN. SEE DETAIL SHEET C-505.
- (N) DO NOT ENTER SIGN. SEE DETAIL SHEET C-505.
- (O) 4' CHAIN LINK FENCE. SEE DETAIL SHEET C-506.
- (P) SINGLE CHAIN LINK GATE. SEE DETAIL SHEET C-506.
- (Q) DOUBLE CHAIN LINK GATE. SEE DETAIL SHEET C-506.
- (R) 9-BIKE BIKE RACK. SEE DETAIL SHEET C-507.
- (S) 6-BIKE BIKE RACK. SEE DETAIL SHEET C-507.
- (T) MULTI-PURPOSE FIELD.
- (U) NEVCO SCOREBOARD MODEL 3550, OR APPROVED EQUAL. SEE DETAIL SHEET C-506.
- (V) PARK ENTRY SIGN. SEE DETAIL SHEET C-508.
- (W) PARK BENCH. SEE DETAIL SHEET C-507.
- (X) TRASH RECEPTACLE. SEE DETAIL SHEET C-507.
- (Y) FLAG POLE. SEE DETAIL SHEET C-507.
- (Z) DOG WASTE STATION. SEE DETAIL SHEET C-507.
- (AA) DRINKING FOUNTAIN. SEE DETAIL SHEET C-507.
- (AB) PLAYGROUND AREA. OWNER TO PROVIDE PLAYGROUND EQUIPMENT, CONTRACTOR TO PREPARE AREA, INCLUDING UNDERDRAIN, AND COORDINATE WITH OWNER FOR EQUIPMENT INSTALLATION.
- (AC) THERMOPLASTIC SURFACE GAMES. SEE DETAIL SHEET C-507.
- (AD) 20'x30' PICNIC SHELTER. SEE DETAIL SHEET C-508.
- (AE) FOOTBALL FIELD GOAL. SEE DETAIL SHEET C-508.
- (AF) OUTDOOR GRILLS. SEE DETAIL SHEET C-507.
- (AG) RESTROOM BUILDING. SEE ARCHITECTURAL SHEETS A-100 THRU A-501.
- (AH) PROPOSED LIGHT FIXTURE. SEE ELECTRICAL SHEETS E-001 TO E-502.
- (AI) PARK DIRECTIONAL SIGN. SEE DETAIL SHEET C-505.
- (AJ) LANDSCAPE/GREEN AREA (TYP).
- (AK) 6" CONCRETE CURB. SEE DETAIL SHEET C-506.
- (AL) VEHICULAR ENTRY GATE. SEE DETAIL SHEET C-506.
- (AM) PROPOSED WELL. SEE UTILITY SHEETS C-301 TO C-305.
- (AN) FROST FREE YARD HYDRANT. SEE DETAIL SHEET C-504.
- (AO) GRANITE SCREENINGS TRAIL. SEE DETAIL SHEET C-508.
- (AP) TAPER CURB FLUSH WITH PAVEMENT IN 12".



P:\PROJECTS\2021\HERITAGE FARM PARK\IMPROVEMENTS\DWG\1728 OAK RIDGE PARK BASE.DWG PLOT DATE: 10/02/21 3:40 PM KURTIS DURRANT

1240 19th Street Lane NW  
Hickory, NC 28601  
828.326.2024  
NC Firm License # C-0459  
mcgillassociates.com

FINAL DRAWING  
FOR REVIEW  
PURPOSES ONLY  
NOT RELEASED  
FOR  
CONSTRUCTION

NO.	DATE	BY	DESCRIPTION

HERITAGE FARM PARK  
**TOWN OF OAK RIDGE**  
GUILFORD COUNTY, NORTH CAROLINA



OFFICE MANAGER D. CHAPMAN	DESIGNER C. CRANWILL
PROJECT MANAGER C. CRANWILL	REVIEWER M. PATTON

DATE OCTOBER 2021	PROJECT # 20,01728	FUNDING #
----------------------	-----------------------	-----------

SITE PLAN - A

SHEET  
**C-101**

**KEY NOTES**

- (A) 4" CONCRETE SIDEWALK, SEE DETAIL SHEET C-505.
- (B) MATCH EXISTING SIDEWALK WITH SMOOTH TRANSITION, USE CONSTRUCTION JOINT AT INTERFACE OF EXISTING AND PROPOSED SIDEWALKS.
- (C) 6" CONCRETE PAVEMENT, SEE DETAIL SHEET C-505.
- (D) ASPHALT TRAIL, SEE DETAIL SHEET C-506.
- (E) ASPHALT, SEE DETAIL SHEET C-505.
- (F) CONCRETE WHEELSTOP, SEE DETAIL SHEET C-505.
- (G) HC PARKING SPACE, SEE DETAIL SHEET C-505.
- (H) HC PARKING SIGN, SEE DETAIL SHEET C-505.
- (I) DETECTABLE WARNING PLATE, BLACK POWDERCOAT FINISH, SEE DETAIL SHEET C-505.
- (J) 4" WHITE PAINT STRIPE.
- (K) TRAFFIC ARROWS AND SYMBOLS, SEE DETAIL SHEET C-508.
- (L) DUMPSTER ENCLOSURE, SEE DETAIL SHEET C-505.
- (M) STOP SIGN, SEE DETAIL SHEET C-505.
- (N) DO NOT ENTER SIGN, SEE DETAIL SHEET C-505.
- (O) 4' CHAIN LINK FENCE, SEE DETAIL SHEET C-506.
- (P) SINGLE CHAIN LINK GATE, SEE DETAIL SHEET C-506.
- (Q) DOUBLE CHAIN LINK GATE, SEE DETAIL SHEET C-506.
- (R) 9-BIKE BIKE RACK, SEE DETAIL SHEET C-507.
- (S) 5-BIKE BIKE RACK, SEE DETAIL SHEET C-507.
- (T) MULTI-PURPOSE FIELD.
- (U) NEVCO SCOREBOARD MODEL 3650, OR APPROVED EQUAL, SEE DETAIL SHEET C-506.
- (V) PARK ENTRY SIGN, SEE DETAIL SHEET C-508.
- (W) PARK BENCH, SEE DETAIL SHEET C-507.
- (X) TRASH RECEPTACLE, SEE DETAIL SHEET C-507.
- (Y) FLAG POLE, SEE DETAIL SHEET C-507.
- (Z) DOG WASTE STATION, SEE DETAIL SHEET C-507.
- (AA) DRINKING FOUNTAIN, SEE DETAIL SHEET C-507.
- (BB) PLAYGROUND AREA, OWNER TO PROVIDE PLAYGROUND EQUIPMENT, CONTRACTOR TO PREPARE AREA, INCLUDING UNDERDRAIN, AND COORDINATE WITH OWNER FOR EQUIPMENT INSTALLATION.
- (CC) THERMOPLASTIC SURFACE GAMES, SEE DETAIL SHEET C-507.
- (DD) 20'x36' PICNIC SHELTER, SEE DETAIL SHEET C-508.
- (EE) FOOTBALL FIELD GOAL, SEE DETAIL SHEET C-508.
- (FF) OUTDOOR GRILLS, SEE DETAIL SHEET C-507.
- (GG) RESTROOM BUILDING, SEE ARCHITECTURAL SHEETS A-100 THRU A-501.
- (HH) PROPOSED LIGHT FIXTURE, SEE ELECTRICAL SHEETS E-001 TO E-802.
- (II) PARK DIRECTIONAL SIGN, SEE DETAIL SHEET C-505.
- (JJ) LANDSCAPE/GREEN AREA (TYP).
- (KK) 6" CONCRETE CURB, SEE DETAIL SHEET C-506.
- (LL) VEHICULAR ENTRY GATE, SEE DETAIL SHEET C-506.
- (MM) PROPOSED WELL, SEE UTILITY SHEETS C-301 TO C-305.
- (NN) FROST FREE YARD HYDRANT, SEE DETAIL SHEET C-504.
- (OO) GRANITE SCREENINGS TRAIL, SEE DETAIL SHEET C-508.
- (PP) TAPER CURB FLUSH WITH PAVEMENT IN 12".

**GENERAL NOTES:**

1. ALL EXISTING CONDITIONS AND TOPOGRAPHIC INFORMATION WAS OBTAINED FROM SURVEY FROM MCGILL ASSOCIATES, DATED APRIL 7, 2021.
2. ALL DEVELOPMENT SHALL CONFORM WITH THE TOWN OF OAK RIDGE DEVELOPMENT ORDINANCE.
3. SITE SIGNAGE SHALL CONFORM WITH APPLICABLE CODES AND ORDINANCES.
4. ALL DIMENSIONS ARE FACE OF CURB, EDGE OF PAVEMENT AND FACE OF WALL, UNLESS OTHERWISE NOTED.
5. THIS SITE IS NOT LOCATED IN ANY FLOOD ZONE.
6. ALL IMPROVEMENTS AND CONSTRUCTION SHALL BE IN ACCORDANCE WITH NORTH CAROLINA STATE STANDARDS. ALL IMPROVEMENTS SHALL COMPLY WITH THE TOWN OF OAK RIDGE STANDARDS FOR STORM DRAINAGE, SIGNAGE, LANDSCAPE, PLANTING, UTILITY AND PARKING REQUIREMENTS.
7. ANY DISCREPANCIES FOUND IN THE FIELD SHALL BE CALLED TO THE ATTENTION OF THE OWNER/ENGINEER/DESIGNER PRIOR TO PROCEEDING WITH ANY WORK.
8. THE GENERAL CONTRACTOR SHALL CONTACT ALL OWNERS OF EASEMENTS, UTILITIES AND RIGHT OF WAYS, PUBLIC OR PRIVATE, PRIOR TO WORKING IN THESE AREAS.
11. HATCHING OF HARD SURFACE MATERIALS SUCH AS BRICK AND CONCRETE ARE FOR GENERAL INFORMATION PURPOSES. IN NO INSTANCE IS A UTILITY LID, COVER OR ACCESS POINT TO BE COVERED OVER AND CONCEALED BY THE PROPOSED SURFACE MATERIAL. ANY HIDDEN UTILITY BOXES, COVERS, ETC DISCOVERED DURING CONSTRUCTION SHALL BE ADJUSTED TO MATCH PROPOSED GRADE ELEVATIONS.

ALSON, CHARLENE S  
PARCEL # 155834  
ZONED RS-30  
12.68 AC.  
LUC 1

GARRETT, JOHN W & SUSAN B  
PARCEL # 155834  
ZONED RS-30  
8.72 AC.  
LUC 1

SITE DATA		
OWNER:	TOWN OF OAK RIDGE	
PROPOSED USE:	PUBLIC PARK	
PARCEL ID NUMBER:	165112	165633 165096
CURRENT ZONING:	HD/RS-30	HD/RS-30 PI
TRACT ACREAGE:	±58.32 AC.	±3.7 AC. ±7.93 AC.
PARKING SPACES PROVIDED:	121	
STANDARD:	116	
ACCESSIBLE:	3	
VAN ACCESSIBLE:	2	

20250810 07:25:00 AM CHARLENE ALSON 155834 PARCEL # 155834 ZONED RS-30 12.68 AC. LUC 1  
 20250810 07:25:00 AM JOHN GARRETT 155834 PARCEL # 155834 ZONED RS-30 8.72 AC. LUC 1  
 20250810 07:25:00 AM HERITAGE FARM PARK IMPROVEMENTS (TYP) TOWN OF OAK RIDGE PARKING LOT DATE: 10/20/21



FINAL DRAWING FOR REVIEW PURPOSES ONLY NOT RELEASED FOR CONSTRUCTION

NO.	DATE	BY	DESCRIPTION

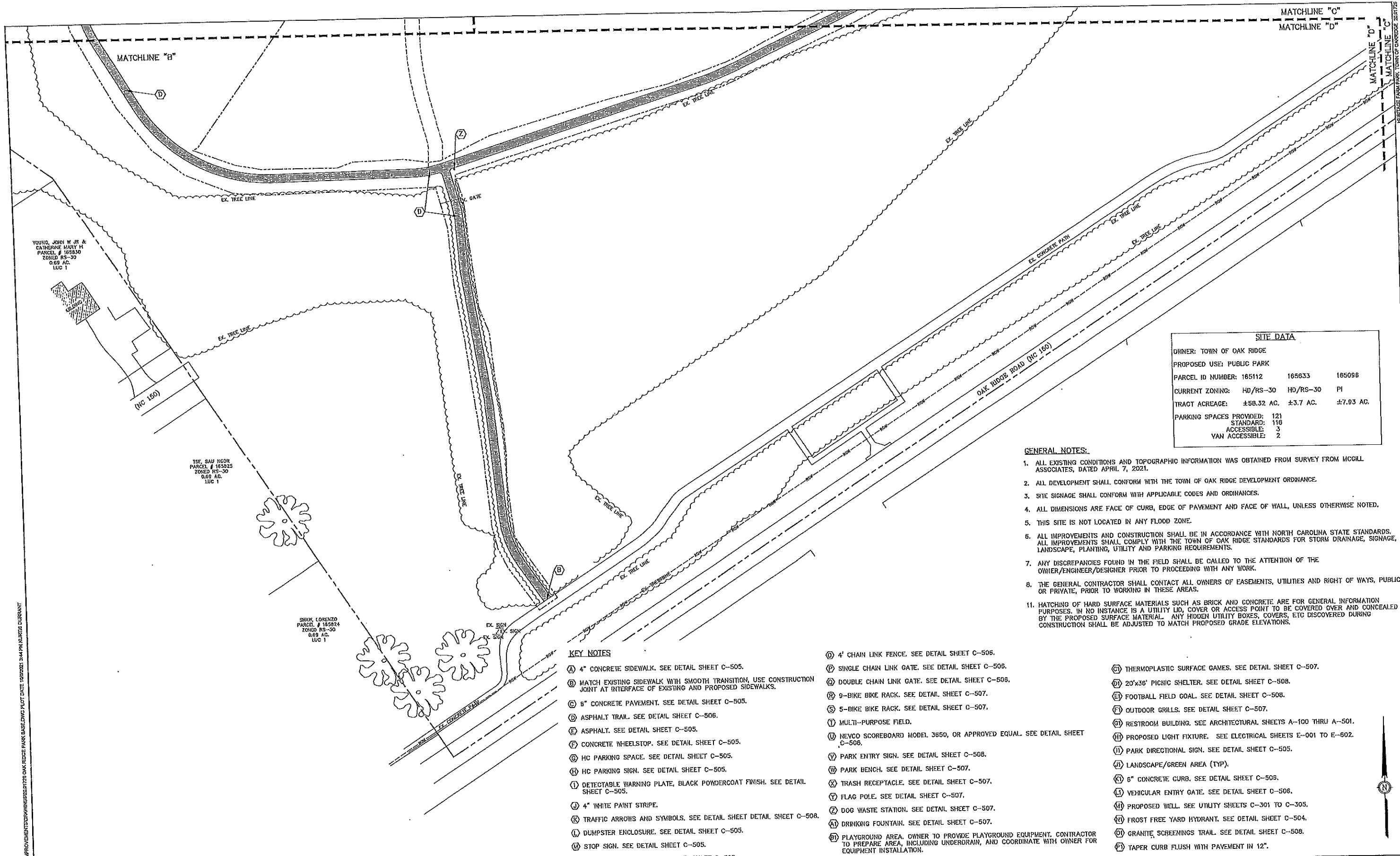
HERITAGE FARM PARK  
**TOWN OF OAK RIDGE**  
GUILFORD COUNTY, NORTH CAROLINA

GRAPHIC SCALE DIVISION VALUE = 40 FEET	
OFFICE MANAGER D. CHAPMAN	DESIGNER C. CRANWILL
PROJECT MANAGER C. CRANWILL	REVIEWER M. PATTON

DATE OCTOBER 2021	PROJECT # 20.01726	FUNDING #
----------------------	-----------------------	-----------

SHEET  
**C-102**

SITE PLAN - B



SITE DATA		
OWNER:	TOWN OF OAK RIDGE	
PROPOSED USE:	PUBLIC PARK	
PARCEL ID NUMBER:	165112	165096
CURRENT ZONING:	HD/RS-30	HD/RS-30
TRACT ACREAGE:	±58.32 AC.	±7.93 AC.
PARKING SPACES PROVIDED:	121	
	STANDARD:	118
	ACCESSIBLE:	3
	VAN ACCESSIBLE:	2

- GENERAL NOTES:**
- ALL EXISTING CONDITIONS AND TOPOGRAPHIC INFORMATION WAS OBTAINED FROM SURVEY FROM MCGILL ASSOCIATES, DATED APRIL 7, 2021.
  - ALL DEVELOPMENT SHALL CONFORM WITH THE TOWN OF OAK RIDGE DEVELOPMENT ORDINANCE.
  - SITE SIGNAGE SHALL CONFORM WITH APPLICABLE CODES AND ORDINANCES.
  - ALL DIMENSIONS ARE FACE OF CURB, EDGE OF PAVEMENT AND FACE OF WALL, UNLESS OTHERWISE NOTED.
  - THIS SITE IS NOT LOCATED IN ANY FLOOD ZONE.
  - ALL IMPROVEMENTS AND CONSTRUCTION SHALL BE IN ACCORDANCE WITH NORTH CAROLINA STATE STANDARDS. ALL IMPROVEMENTS SHALL COMPLY WITH THE TOWN OF OAK RIDGE STANDARDS FOR STORM DRAINAGE, SIGNAGE, LANDSCAPE, PLANTING, UTILITY AND PARKING REQUIREMENTS.
  - ANY DISCREPANCIES FOUND IN THE FIELD SHALL BE CALLED TO THE ATTENTION OF THE OWNER/ENGINEER/DESIGNER PRIOR TO PROCEEDING WITH ANY WORK.
  - THE GENERAL CONTRACTOR SHALL CONTACT ALL OWNERS OF EASEMENTS, UTILITIES AND RIGHT OF WAYS, PUBLIC OR PRIVATE, PRIOR TO WORKING IN THESE AREAS.
  - HATCHING OF HARD SURFACE MATERIALS SUCH AS BRICK AND CONCRETE ARE FOR GENERAL INFORMATION PURPOSES. IN NO INSTANCE IS A UTILITY LID, COVER OR ACCESS POINT TO BE COVERED OVER AND CONCEALED BY THE PROPOSED SURFACE MATERIAL. ANY HIDDEN UTILITY BOXES, COVERS, ETC DISCOVERED DURING CONSTRUCTION SHALL BE ADJUSTED TO MATCH PROPOSED GRADE ELEVATIONS.

**KEY NOTES**

- (A) 4" CONCRETE SIDEWALK. SEE DETAIL SHEET C-505.
- (B) MATCH EXISTING SIDEWALK WITH SMOOTH TRANSITION, USE CONSTRUCTION JOINT AT INTERFACE OF EXISTING AND PROPOSED SIDEWALKS.
- (C) 6" CONCRETE PAVEMENT. SEE DETAIL SHEET C-505.
- (D) ASPHALT TRAIL. SEE DETAIL SHEET C-506.
- (E) ASPHALT. SEE DETAIL SHEET C-505.
- (F) CONCRETE WHEELSTOP. SEE DETAIL SHEET C-505.
- (G) HC PARKING SPACE. SEE DETAIL SHEET C-505.
- (H) HC PARKING SIGN. SEE DETAIL SHEET C-505.
- (I) DETECTABLE WARNING PLATE, BLACK POWDERCOAT FINISH. SEE DETAIL SHEET C-505.
- (J) 4" WHITE PAINT STRIPE.
- (K) TRAFFIC ARROWS AND SYMBOLS. SEE DETAIL SHEET C-505.
- (L) DUMPSTER ENCLOSURE. SEE DETAIL SHEET C-505.
- (M) STOP SIGN. SEE DETAIL SHEET C-505.
- (N) DO NOT ENTER SIGN. SEE DETAIL SHEET C-505.
- (O) 4' CHAIN LINK FENCE. SEE DETAIL SHEET C-506.
- (P) SINGLE CHAIN LINK GATE. SEE DETAIL SHEET C-506.
- (Q) DOUBLE CHAIN LINK GATE. SEE DETAIL SHEET C-506.
- (R) 9-BIKE BIKE RACK. SEE DETAIL SHEET C-507.
- (S) 5-BIKE BIKE RACK. SEE DETAIL SHEET C-507.
- (T) MULTI-PURPOSE FIELD.
- (U) NEVCO SCOREBOARD MODEL 3850, OR APPROVED EQUAL. SEE DETAIL SHEET C-506.
- (V) PARK ENTRY SIGN. SEE DETAIL SHEET C-508.
- (W) PARK BENCH. SEE DETAIL SHEET C-507.
- (X) TRASH RECEPTACLE. SEE DETAIL SHEET C-507.
- (Y) FLAG POLE. SEE DETAIL SHEET C-507.
- (Z) DOG WASTE STATION. SEE DETAIL SHEET C-507.
- (AA) DRINKING FOUNTAIN. SEE DETAIL SHEET C-507.
- (AB) PLAYGROUND AREA. OWNER TO PROVIDE PLAYGROUND EQUIPMENT. CONTRACTOR TO PREPARE AREA, INCLUDING UNDERDRAIN, AND COORDINATE WITH OWNER FOR EQUIPMENT INSTALLATION.
- (AC) THERMOPLASTIC SURFACE GAMES. SEE DETAIL SHEET C-507.
- (AD) 20'x36' PICNIC SHELTER. SEE DETAIL SHEET C-508.
- (AE) FOOTBALL FIELD GOAL. SEE DETAIL SHEET C-508.
- (AF) OUTDOOR GRILLS. SEE DETAIL SHEET C-507.
- (AG) RESTROOM BUILDING. SEE ARCHITECTURAL SHEETS A-100 THRU A-501.
- (AH) PROPOSED LIGHT FIXTURE. SEE ELECTRICAL SHEETS E-001 TO E-602.
- (AI) PARK DIRECTIONAL SIGN. SEE DETAIL SHEET C-505.
- (AJ) LANDSCAPE/GREEN AREA (TYP).
- (AK) 6" CONCRETE CURB. SEE DETAIL SHEET C-505.
- (AL) VEHICULAR ENTRY GATE. SEE DETAIL SHEET C-506.
- (AM) PROPOSED WELL. SEE UTILITY SHEETS C-301 TO C-305.
- (AN) FROST FREE YARD HYDRANT. SEE DETAIL SHEET C-504.
- (AO) GRANITE SCREENINGS TRAIL. SEE DETAIL SHEET C-508.
- (AP) TAPER CURB FLUSH WITH PAVEMENT IN 12".



OFFICE MANAGER	DESIGNER
D. CHAPMAN	C. CRANWILL
PROJECT MANAGER	REVIEWER
C. CRANWILL	M. PATTON

DATE	PROJECT #	FUNDING #
OCTOBER 2021	20.01728	

1240 19th Street Lane NW  
Hickory, NC 28601  
828.328.2024  
NC Firm License # C-0459  
mcgillassociates.com

FINAL DRAWING FOR REVIEW PURPOSES ONLY NOT RELEASED FOR CONSTRUCTION

NO.	DATE	BY	DESCRIPTION

HERITAGE FARM PARK  
**TOWN OF OAK RIDGE**  
GUILFORD COUNTY, NORTH CAROLINA

SITE PLAN - C

SHEET  
**C-103**

PROJECT LOCATION: 19020281-244 PARKWAY DURHAM, NC 27604

**GENERAL NOTES:**

- ALL EXISTING CONDITIONS AND TOPOGRAPHIC INFORMATION WAS OBTAINED FROM SURVEY FROM MCGILL ASSOCIATES, DATED APRIL 7, 2021.
- ALL DEVELOPMENT SHALL CONFORM WITH THE TOWN OF OAK RIDGE DEVELOPMENT ORDINANCE.
- SITE SIGNAGE SHALL CONFORM WITH APPLICABLE CODES AND ORDINANCES.
- ALL DIMENSIONS ARE FACE OF CURB, EDGE OF PAVEMENT AND FACE OF WALL, UNLESS OTHERWISE NOTED.
- THIS SITE IS NOT LOCATED IN ANY FLOOD ZONE.
- ALL IMPROVEMENTS AND CONSTRUCTION SHALL BE IN ACCORDANCE WITH NORTH CAROLINA STATE STANDARDS. ALL IMPROVEMENTS SHALL COMPLY WITH THE TOWN OF OAK RIDGE STANDARDS FOR STORM DRAINAGE, SIGNAGE, LANDSCAPE, PLANTING, UTILITY AND PARKING REQUIREMENTS.
- ANY DISCREPANCIES FOUND IN THE FIELD SHALL BE CALLED TO THE ATTENTION OF THE OWNER/ENGINEER/DESIGNER PRIOR TO PROCEEDING WITH ANY WORK.
- THE GENERAL CONTRACTOR SHALL CONTACT ALL OWNERS OF EASEMENTS, UTILITIES AND RIGHT OF WAYS, PUBLIC OR PRIVATE, PRIOR TO WORKING IN THESE AREAS.
- HATCHING OF HARD SURFACE MATERIALS SUCH AS BRICK AND CONCRETE ARE FOR GENERAL INFORMATION PURPOSES. IN NO INSTANCE IS A UTILITY LID, COVER OR ACCESS POINT TO BE COVERED OVER AND CONCEALED BY THE PROPOSED SURFACE MATERIAL. ANY HIDDEN UTILITY BOXES, COVERS, ETC DISCOVERED DURING CONSTRUCTION SHALL BE ADJUSTED TO MATCH PROPOSED GRADE ELEVATIONS.

**SITE DATA**

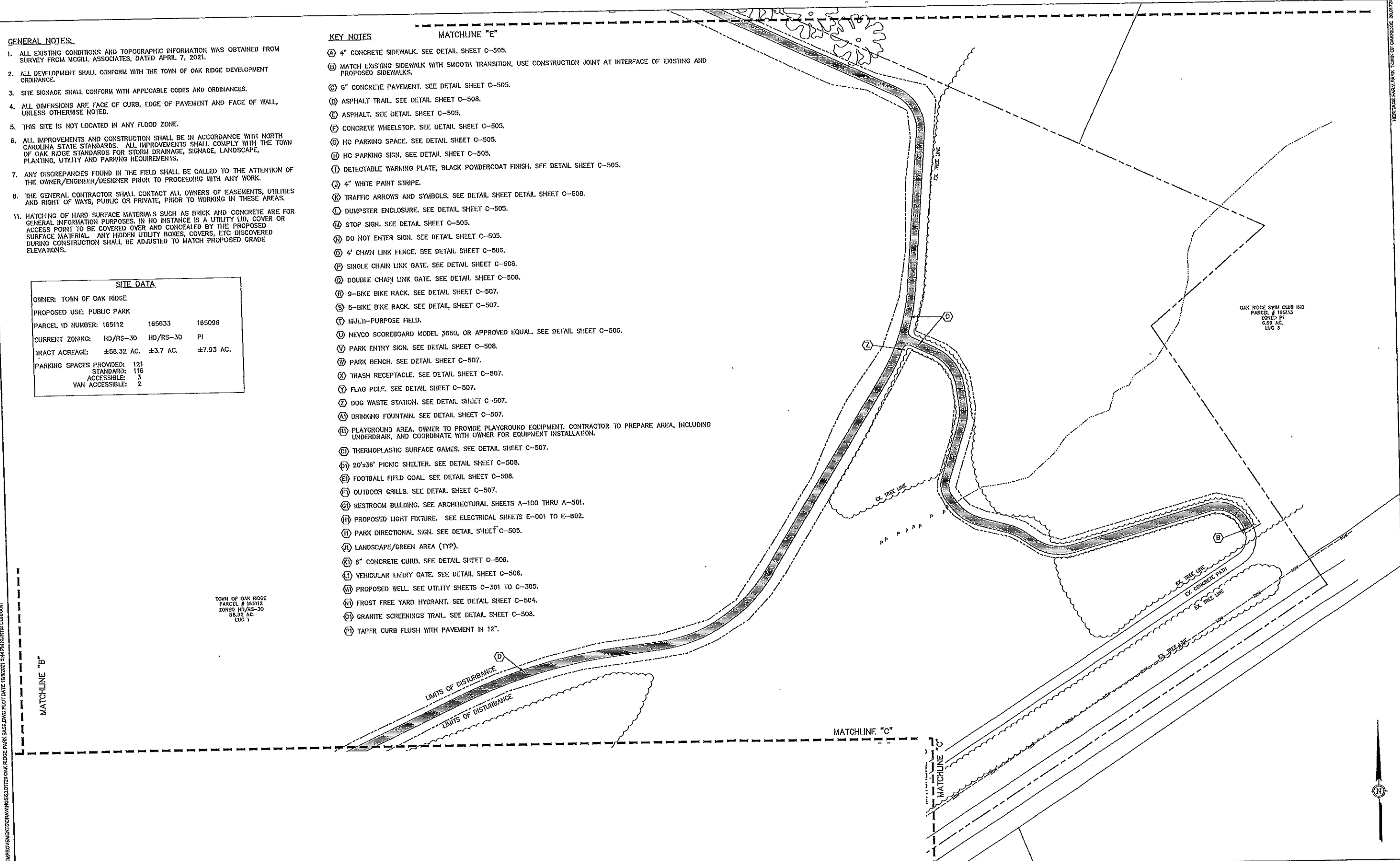
OWNER: TOWN OF OAK RIDGE  
 PROPOSED USE: PUBLIC PARK  
 PARCEL ID NUMBER: 165112    165633    165098  
 CURRENT ZONING: HD/RS-30    HD/RS-30    PI  
 TRACT ACREAGE: ±58.32 AC.    ±3.7 AC.    ±7.93 AC.  
 PARKING SPACES PROVIDED: 121  
   STANDARD: 116  
   ACCESSIBLE: 5  
   VAN ACCESSIBLE: 2

**KEY NOTES**

- MATCHLINE "E"
- (A) 4" CONCRETE SIDEWALK. SEE DETAIL SHEET C-505.
  - (B) MATCH EXISTING SIDEWALK WITH SMOOTH TRANSITION, USE CONSTRUCTION JOINT AT INTERFACE OF EXISTING AND PROPOSED SIDEWALKS.
  - (C) 6" CONCRETE PAVEMENT. SEE DETAIL SHEET C-505.
  - (D) ASPHALT TRAIL. SEE DETAIL SHEET C-506.
  - (E) ASPHALT. SEE DETAIL SHEET C-505.
  - (F) CONCRETE WHEELSTOP. SEE DETAIL SHEET C-505.
  - (G) HC PARKING SPACE. SEE DETAIL SHEET C-505.
  - (H) HC PARKING SIGN. SEE DETAIL SHEET C-505.
  - (I) DETECTABLE WARNING PLATE, BLACK POWDERCOAT FINISH. SEE DETAIL SHEET C-505.
  - (J) 4" WHITE PAINT STRIPE.
  - (K) TRAFFIC ARROWS AND SYMBOLS. SEE DETAIL SHEET C-508.
  - (L) DUMPSTER ENCLOSURE. SEE DETAIL SHEET C-505.
  - (M) STOP SIGN. SEE DETAIL SHEET C-505.
  - (N) DO NOT ENTER SIGN. SEE DETAIL SHEET C-505.
  - (O) 4' CHAIN LINK FENCE. SEE DETAIL SHEET C-506.
  - (P) SINGLE CHAIN LINK GATE. SEE DETAIL SHEET C-506.
  - (Q) DOUBLE CHAIN LINK GATE. SEE DETAIL SHEET C-506.
  - (R) 9-BIKE BIKE RACK. SEE DETAIL SHEET C-507.
  - (S) 5-BIKE BIKE RACK. SEE DETAIL SHEET C-507.
  - (T) MULTI-PURPOSE FIELD.
  - (U) NEVCO SCOREBOARD MODEL 3650, OR APPROVED EQUAL. SEE DETAIL SHEET C-506.
  - (V) PARK ENTRY SIGN. SEE DETAIL SHEET C-508.
  - (W) PARK BENCH. SEE DETAIL SHEET C-507.
  - (X) TRASH RECEPTACLE. SEE DETAIL SHEET C-507.
  - (Y) FLAG POLE. SEE DETAIL SHEET C-507.
  - (Z) DOG WASTE STATION. SEE DETAIL SHEET C-507.
  - (AA) DRINKING FOUNTAIN. SEE DETAIL SHEET C-507.
  - (AB) PLAYGROUND AREA. OWNER TO PROVIDE PLAYGROUND EQUIPMENT. CONTRACTOR TO PREPARE AREA, INCLUDING UNDERDRAIN, AND COORDINATE WITH OWNER FOR EQUIPMENT INSTALLATION.
  - (AC) THERMOPLASTIC SURFACE GAMES. SEE DETAIL SHEET C-507.
  - (AD) 20'x36' PICNIC SHELTER. SEE DETAIL SHEET C-508.
  - (AE) FOOTBALL FIELD GOAL. SEE DETAIL SHEET C-508.
  - (AF) OUTDOOR GRILLS. SEE DETAIL SHEET C-507.
  - (AG) RESTROOM BUILDING. SEE ARCHITECTURAL SHEETS A-100 THRU A-501.
  - (AH) PROPOSED LIGHT FIXTURE. SEE ELECTRICAL SHEETS E-001 TO E-602.
  - (AI) PARK DIRECTIONAL SIGN. SEE DETAIL SHEET C-505.
  - (AJ) LANDSCAPE/GREEN AREA (TYP).
  - (AK) 6" CONCRETE CURB. SEE DETAIL SHEET C-506.
  - (AL) VEHICULAR ENTRY GATE. SEE DETAIL SHEET C-506.
  - (AM) PROPOSED WELL. SEE UTILITY SHEETS C-301 TO C-305.
  - (AN) FROST FREE YARD HYDRANT. SEE DETAIL SHEET C-504.
  - (AO) GRANITE SCREENINGS TRAIL. SEE DETAIL SHEET C-508.
  - (AP) TAPER CURB FLUSH WITH PAVEMENT IN 12".

TOWN OF OAK RIDGE  
 PARCEL # 165112  
 ZONED HD/RS-30  
 58.32 AC.  
 LUC 1

OAK RIDGE SWIM CLUB INC  
 PARCEL # 165113  
 EDDED PT  
 6.89 AC.  
 LUC 3



PROJECT # 20-01725 - OAK RIDGE PARK IMPROVEMENTS DRAWING - 2021.10.27 10:44 AM KURTIS DURANT

MATCHLINE "B"

MATCHLINE "C"

MATCHLINE "C"

1240 19th Street Lane NW  
 Hickory, NC 28601  
 828.328.2024  
 NC Firm License # C-0459  
 mcgillassociates.com

FINAL DRAWING FOR REVIEW PURPOSES ONLY NOT RELEASED FOR CONSTRUCTION

NO.	DATE	BY	DESCRIPTION

HERITAGE FARM PARK  
**TOWN OF OAK RIDGE**  
 GUILFORD COUNTY, NORTH CAROLINA

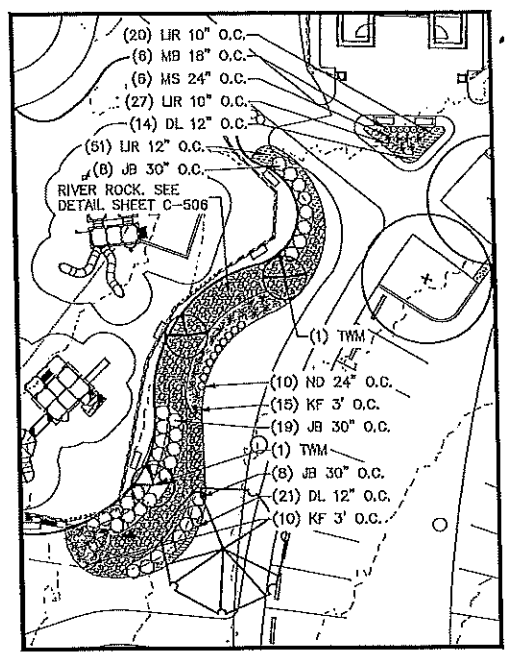
GRAPHIC SCALE    DIVISION VALUE = 40 FEET

OFFICE MANAGER D. CHAPMAN	DESIGNER C. CRANWILL
PROJECT MANAGER C. CRANWILL	REVIEWER M. PATTON

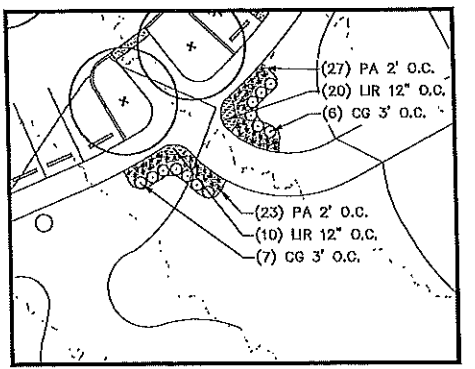
SITE PLAN - D

DATE OCTOBER 2021	PROJECT # 20.01725	PLANS #
----------------------	-----------------------	---------

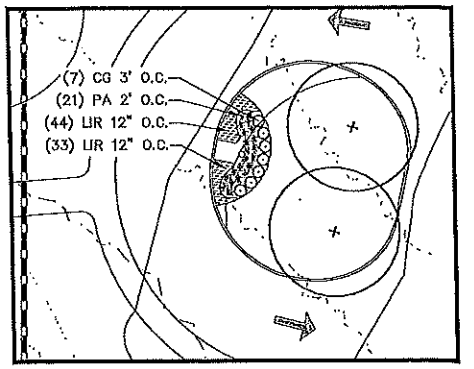
SHEET  
**C-104**



INSET A



INSET B



INSET C

**REQUIRED LANDSCAPE:**  
PARKING LOT TREES: 1 CANOPY PER 6 PARKING SPACES.  
REQUIRED: 121 PS = 20 CANOPY TREES  
PROVIDED: 20 CANOPY TREES

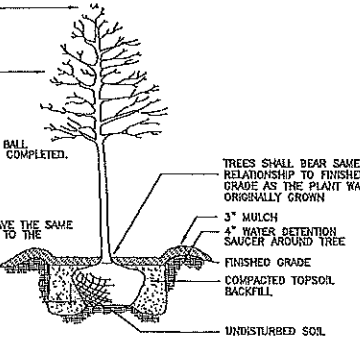
PLANTING SCHEDULE										
SYM.	QTY.	BOTANICAL NAME	COMMON NAME	SIZE	*CALIPER	HEIGHT	SPREAD	NOTES		
TREES										
AF	12	Acer x fremannii 'Autumn Blaze'	Autumn Blaze Freeman Maple	B&B	2" MIN.	10' Min.	4' Min.	---		
CC	3	Cercis canadensis	Eastern Redbud	B&B	1.5" MIN.	8' Min.	3' Min.	---		
NS	6	Ilex x 'Nellie Stevens'	Nellie Stevens Holly	B&B	---	10' Min.	4' Min.	---		
YO	83	Thuja occidentalis 'Emerald'	Emerald Arborvitae	---	---	6' Min.	2' Min.	---		
TYM	2	Morella cerifera	Wax Myrtle	---	1" MIN	6' Min.	2' Min.	Mfn. 3 Stem TF		
ZS	8	Zelkova serrata 'Village Green'	Village Green Zelkova	B&B	2" MIN.	10' Min.	4' Min.	---		
SHRUBS										
CG	20	Cryptomeria japonica 'Globosa Nana'	Globe Cryptomeria	3 Gal.	---	30" Min.	24" Min.	---		
DM	16	Distylium myricoides 'Linebacker'	Linebacker Distylium	7 Gal.	---	48" Min.	20" Min.	---		
JB	35	Distylium myricoides 'Jewel Box'	Jewel Box Distylium	3 Gal.	---	10" Min.	8" Min.	---		
MB	6	Thuja occidentalis 'Anna Van Vloten'	Anna's Magic Ball Arborvitae	2 Gal.	---	10" Min.	8" Min.	---		
ND	10	Nandina domestica 'Flirt'	Flirt Nandina	2 Gal.	---	10" Min.	8" Min.	---		
ORNAMENTAL GRASSES/PERENNIALS										
DL	35	Hemerocallis 'Stella D'Oro'	Stella D'Oro Daylily	Quart	---	---	---	---		
MS	6	Miscanthus sinensis 'Little Kitten'	Little Kitten Miscanthus	1 Gal.	---	---	---	---		
KF	15	Calamagrostis x acutiflora 'Karl Foerster'	Karl Foerster Feather Reed	1 Gal.	---	---	---	---		
PA	71	Pennisetum clopecuroides 'Hameiri'	Hameiri Fountain Grass	1 Gal.	---	---	---	---		
LIR	158	Liriodendron muscari 'Big Blue'	Liriodendron	4"	---	---	---	---		

DO NOT REMOVE LEADER

THIN BRANCHES AND FOLIAGE BY 1/3, RETAINING NATURAL TREE SHAPE

NOTES: REMOVE BURLAP FROM TOP OF ROOT BALL BEFORE BACKFILLING AROUND BALL IS COMPLETED.

ALL TREES WHEN PLANTED SHALL HAVE THE SAME RELATIONSHIP TO FINISHED GRADE AS TO THE ORIGINAL PLANTING DEPTH.

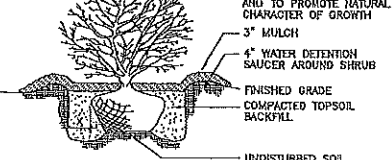


TYP. TREE PLANTING DETAIL  
NOT TO SCALE

1. ALL SHRUB BEDS SHALL BE RAISED 6" - 8" ABOVE ADJACENT GRADE, AND FILLED WITH SOIL CONDITIONER.

2. ALL SHRUB BEDS IN PARKING SPACES ONLY SHALL BE RAISED 12" ABOVE ADJACENT GRADE AND FILLED WITH SOIL CONDITIONER.

PRUNE PROPORTIONATELY TO COMPENSATE FOR REDUCTION OF ROOTS AND TO PROMOTE NATURAL CHARACTER OF GROWTH



TYP. SHRUB PLANTING DETAIL  
NOT TO SCALE

NOTE:

- 1. ALL SHRUB BEDS SHALL BE RAISED 6" - 8" ABOVE ADJACENT GRADE AND FILLED WITH SOIL CONDITIONER
- 2. "V"-CHANNEL EDGE TO BE LOCATED ALONG OUTER PERIMETER OF SHRUB PLANTING AREAS WHERE SHRUBS ARE PLANTED IN GROUPS INSTEAD OF INDIVIDUAL LOCATIONS

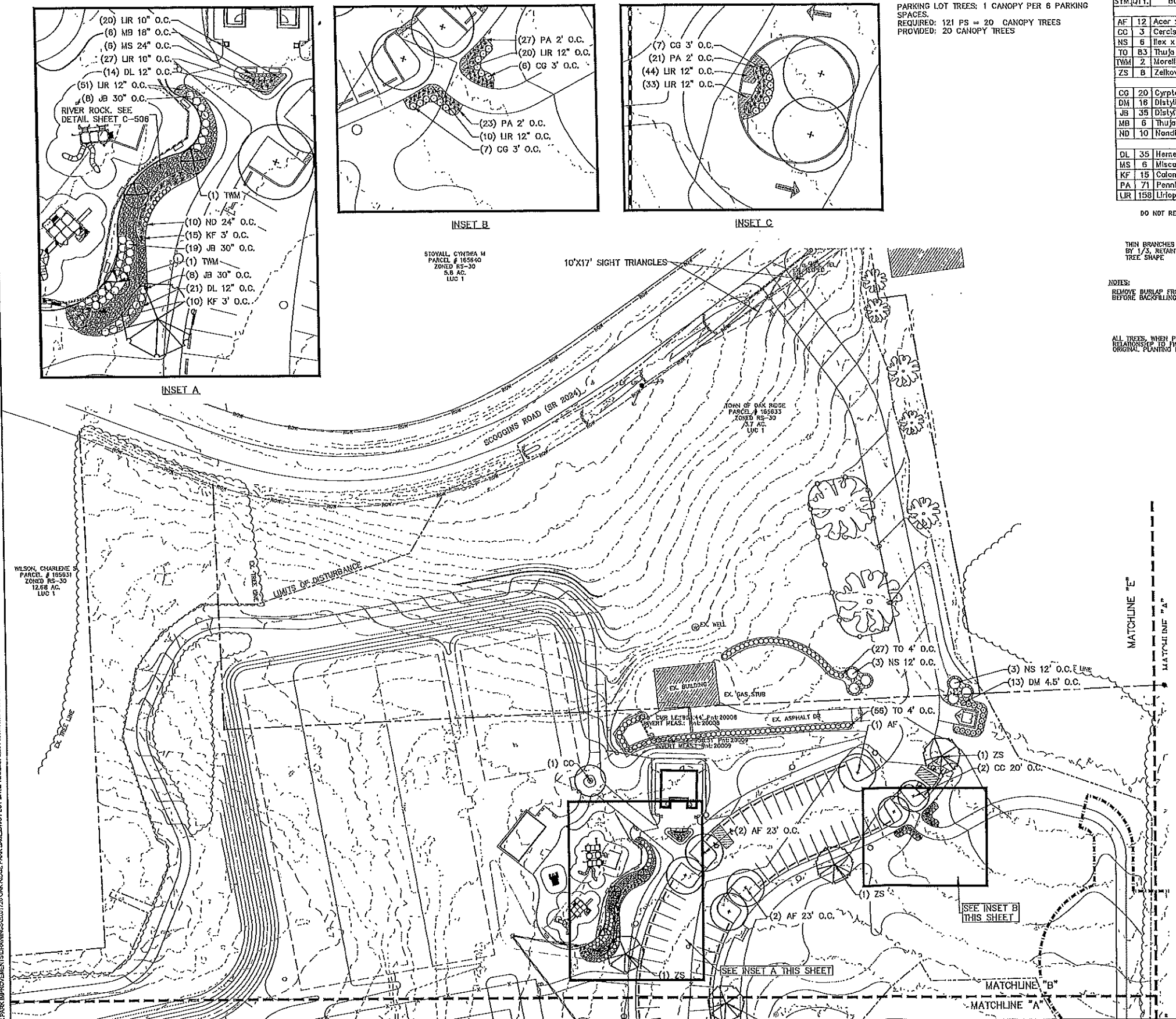
TYPICAL "V"-CHANNEL EDGE FOR ALL MULCHED PLANTING AREAS



TYP. "V"-CHANNEL EDGE DETAIL  
NOT TO SCALE

**GENERAL NOTES:**

- 1. LANDSCAPE CONTRACTOR TO VISIT THE SITE AND ACCEPT THE CONDITIONS PRIOR TO BIDDING AND PLANT MATERIAL INSTALLATION.
- 2. LANDSCAPE CONTRACTOR TO VERIFY ALL UNDERGROUND UTILITIES PRIOR TO INSTALLATION OF ANY PLANT MATERIAL. UTILITY LINES SHOWN ON DRAWINGS ARE FOR GENERAL REFERENCE AND MAY NOT BE ALL INCLUSIVE.
- 3. LANDSCAPE CONTRACTOR TO PROTECT ALL EXISTING STRUCTURES DURING INSTALLATION OF PLANT MATERIAL.
- 4. LANDSCAPE CONTRACTOR IS RESPONSIBLE FOR ALL FINE GRADING OF LAWN AND PLANTING AREAS DISTURBED DURING CONSTRUCTION. REMOVE ALL TEMPORARY SEEDING/STABILIZATION, STONES, GRAVEL, AND ALL EXTRANEIOUS DEBRIS INCLUDING ROOTS AND LIMBS.
- 5. ALL PLANT BEDS TO BE TILLED AND AMENDED TO A DEPTH OF 12". THE ENTIRE AREA IS TO BE COVERED WITH 3" CLEAN TRIPLE SHRED HARDWOOD MULCH IMMEDIATELY AFTER PLANTING.
- 6. ALL BEDS TO CONSIST OF 1 PART EXISTING SOIL, 1 PART FRAILABLE SOIL, AND 1 PART SOIL CONDITIONER. ALL PLANT BEDS SHOULD BE TILLED IN THEIR ENTIRETY. NO PIT PLANTING OF BEDS WILL BE ACCEPTED.
- 7. LANDSCAPE CONTRACTOR SHALL FURNISH ALL QUANTITIES NECESSARY TO COMPLETE PLANTINGS AS SHOWN/LOCATED ON DRAWINGS. QUANTITIES SHOWN ON PLANT LIST ARE FOR CONVENIENCE OF CONTRACTORS AND ARE BELIEVED TO BE SUBSTANTIALLY CORRECT, BUT ACCURACY OF QUANTITIES IN LIST IS NOT GUARANTEED.
- 8. LANDSCAPE CONTRACTOR TO GUARANTEE ALL PLANT MATERIAL AND WORK FOR A PERIOD OF ONE YEAR FROM ACCEPTANCE OF WORK BY OWNER.
- 9. ANY PLANT MATERIAL SUBSTITUTIONS OR ADJUSTMENTS ARE TO BE REQUESTED IN WRITING TO THE OWNER. NO SUBSTITUTIONS WILL BE PERMITTED WITHOUT WRITTEN NOTICE BY THE OWNER.
- 10. ALL PLANT MATERIAL TO CONFORM TO THE CURRENT EDITION OF "AMERICAN STANDARD FOR NURSERY STOCK".
- 11. ALL TREES PLANTED IN GRASS AREAS SHALL HAVE A 4' DIAMETER MULCH RING.
- 12. ALL GRASS TO PLANT BED BORDERS ARE TO BE NEATLY EDGED WITH A VERTICAL EDGE.
- 13. ALL TREES SHALL BE SPECIMEN QUALITY AND WELL SHAPED.
- 14. ALL TREES OF THE SAME VARIETY SHALL MATCH IN SHAPE, FORM, AND SIZE WHERE THEY ARE TO BE INSTALLED IN GROUPS, ROWS, OR AS STREET TREES.
- 15. MINOR SHIFTING AND ADJUSTING OF PROPOSED TREE LOCATIONS MAY BE REQUIRED DUE TO EXACT LOCATION OF UNDERGROUND UTILITIES. LANDSCAPE CONTRACTOR TO CONTACT LANDSCAPE ARCHITECT PRIOR TO RELOCATION.
- 16. PRIOR TO SEEDING, LANDSCAPE CONTRACTOR IS TO CONTACT GENERAL CONTRACTOR FOR VERIFICATION THAT ALL LAND DISTURBING ACTIVITY HAS BEEN COMPLETED.
- 17. LANDSCAPE CONTRACTOR TO SEED ALL AREAS PER SPECIFICATIONS. ADD FERTILIZER AND LIME AS RECOMMENDED BY SOIL TEST. ALL NEWLY SEEDED AREAS SHOULD BE STAKED OFF FROM PEDESTRIANS AND VEHICLES FOR A PERIOD OF THREE WEEKS.
- 19. LANDSCAPE CONTRACTOR TO OBTAIN GRADING PLAN FOR COORDINATION OF FINAL GRADES.



1240 19th Street Lane NW  
Hickory, NC 28601  
828.328.2024  
NC Firm License # C-0459  
mcgillassociates.com

FINAL DRAWING FOR REVIEW PURPOSES ONLY NOT RELEASED FOR CONSTRUCTION

NO.	DATE	BY	DESCRIPTION

HERITAGE FARM PARK  
**TOWN OF OAK RIDGE**  
GUILFORD COUNTY, NORTH CAROLINA

GRAPHIC SCALE DIVISION VALUE = 40 FEET

OFFICE MANAGER D. CHAPMAN	DESIGNER C. CRANWILL
PROJECT MANAGER C. CRANWILL	REVIEWER M. PATTON

DATE OCTOBER 2021	PROJECT # 20.01726	FUNDING # XXXXXX
----------------------	-----------------------	---------------------

SHEET  
**L-101**

**REQUIRED LANDSCAPE:**

PARKING LOT TREES: 1 CANOPY PER 6 PARKING SPACES.  
 REQUIRED: 121 PS = 20 CANOPY TREES  
 PROVIDED: 20 CANOPY TREES

**NOTE:**

1. ALL SHRUB BEDS SHALL BE RAISED 6" - 8" ABOVE ADJACENT GRADE AND FILLED WITH SOIL CONDITIONER
2. "V"-CHANNEL EDGE TO BE LOCATED ALONG OUTER PERIMETER OF SHRUB PLANTING AREAS WHERE SHRUBS ARE PLANTED IN GROUPS INSTEAD OF INDIVIDUAL LOCATIONS

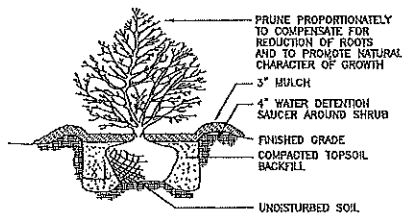
TYPICAL "V"-CHANNEL EDGE FOR ALL MULCHED PLANTING AREAS



TYP. "V"-CHANNEL EDGE DETAIL

Not To Scale

1. ALL SHRUB BEDS SHALL BE RAISED 6" - 8" ABOVE ADJACENT GRADE AND FILLED WITH SOIL CONDITIONER.
2. ALL SHRUB BEDS IN PARKING ISLANDS ONLY SHALL BE RAISED 12" ABOVE ADJACENT GRADE AND FILLED WITH SOIL CONDITIONER.



TYP. SHRUB PLANTING DETAIL

NOT TO SCALE

**GENERAL NOTES:**

1. LANDSCAPE CONTRACTOR TO VISIT THE SITE AND ACCEPT THE CONDITIONS PRIOR TO BIDDING AND PLANT MATERIAL INSTALLATION.
2. LANDSCAPE CONTRACTOR TO VERIFY ALL UNDERGROUND UTILITIES PRIOR TO INSTALLATION OF ANY PLANT MATERIAL. UTILITY LINES SHOWN ON DRAWINGS ARE FOR GENERAL REFERENCE AND MAY NOT BE ALL INCLUSIVE.
3. LANDSCAPE CONTRACTOR TO PROTECT ALL EXISTING STRUCTURES DURING INSTALLATION OF PLANT MATERIAL.
4. LANDSCAPE CONTRACTOR IS RESPONSIBLE FOR ALL FINE GRADING OF LAWN AND PLANTING AREAS DISTURBED DURING CONSTRUCTION. REMOVE ALL TEMPORARY SEEDING/STABILIZATION, STONES, GRAVEL, AND ALL EXTRANEOUS DEBRIS INCLUDING ROOTS AND LIMBS.
5. ALL PLANT BEDS TO BE FILLED AND AMENDED TO A DEPTH OF 12". THE ENTIRE AREA IS TO BE COVERED WITH 3" CLEAN TRIPLE SHRED HARDWOOD MULCH IMMEDIATELY AFTER PLANTING.
6. ALL BEDS TO CONSIST OF 1 PART EXISTING SOIL, 1 PART FRIABLE SOIL, AND 1 PART SOIL CONDITIONER. ALL PLANT BEDS SHOULD BE FILLED IN THEIR ENTIRETY. NO PIT PLANTING OF BEDS WILL BE ACCEPTED.
7. LANDSCAPE CONTRACTOR SHALL FURNISH ALL QUANTITIES NECESSARY TO COMPLETE PLANTINGS AS SHOWN/LOCATED ON DRAWINGS. QUANTITIES SHOWN ON PLANT LIST ARE FOR CONVENIENCE OF CONTRACTORS AND ARE BELIEVED TO BE SUBSTANTIALLY CORRECT, BUT ACCURACY OF QUANTITIES IN LIST IS NOT GUARANTEED.
8. LANDSCAPE CONTRACTOR TO GUARANTEE ALL PLANT MATERIAL AND WORK FOR A PERIOD OF ONE YEAR FROM ACCEPTANCE OF WORK BY OWNER.
9. ANY PLANT MATERIAL SUBSTITUTIONS OR ADJUSTMENTS ARE TO BE REQUESTED IN WRITING TO THE OWNER. NO SUBSTITUTIONS WILL BE PERMITTED WITHOUT WRITTEN NOTICE BY THE OWNER.
10. ALL PLANT MATERIAL TO CONFORM TO THE CURRENT EDITION OF "AMERICAN STANDARD FOR NURSERY STOCK".
11. ALL TREES PLANTED IN GRASS AREAS SHALL HAVE A 4' DIAMETER MULCH RING.
12. ALL GRASS TO PLANT BED BORDERS ARE TO BE NEATLY EDGED WITH A VERTICAL EDGE.
13. ALL TREES SHALL BE SPECIMEN QUALITY AND WELL SHAPED.
14. ALL TREES OF THE SAME VARIETY SHALL MATCH IN SHAPE, FORM, AND SIZE WHERE THEY ARE TO BE INSTALLED IN GROUPS, ROWS, OR AS STREET TREES.
15. MINOR SHIFTING AND ADJUSTING OF PROPOSED TREE LOCATIONS MAY BE REQUIRED DUE TO EXACT LOCATION OF UNDERGROUND UTILITIES. LANDSCAPE CONTRACTOR TO CONTACT LANDSCAPE ARCHITECT PRIOR TO RELOCATION.
16. PRIOR TO SEEDING, LANDSCAPE CONTRACTOR IS TO CONTACT GENERAL CONTRACTOR FOR VERIFICATION THAT ALL LAND DISTURBING ACTIVITY HAS BEEN COMPLETED.
17. LANDSCAPE CONTRACTOR TO SEED ALL AREAS PER SPECIFICATIONS. ADD FERTILIZER AND LIME AS RECOMMENDED BY SOIL TEST. ALL NEWLY SEEDING AREAS SHOULD BE STAKED OFF FROM PEDESTRIANS AND VEHICLES FOR A PERIOD OF THREE WEEKS.
18. LANDSCAPE CONTRACTOR TO OBTAIN GRADING PLAN FOR COORDINATION OF FINAL GRADES.

W & SUSAN B  
 1 185824  
 RS-30

DO NOT REMOVE LEADER

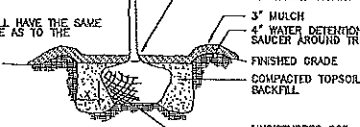
TRIM BRANCHES AND FOLIAGE BY 1/3, RETAINING NATURAL TREE SHAPE

**NOTES:**

REMOVE BURLAP FROM TOP OF ROOT BALL BEFORE BACKFILLING AROUND BALL IS COMPLETED.

TREES SHALL BEAR SAME RELATIONSHIP TO FINISHED GRADE AS THE PLANT WAS ORIGINALLY GROWN

ALL TREES, WHEN PLANTED, SHALL HAVE THE SAME RELATIONSHIP TO FINISHED GRADE AS TO THE ORIGINAL PLANTING DEPTH.



TYP. TREE PLANTING DETAIL

NOT TO SCALE

**PLANTING SCHEDULE**

SYM	QTY	BOTANICAL NAME	COMMON NAME	SIZE	PCALIPER	HEIGHT	SPREAD	NOTES
TREES								
AF	12	Acer x fremontii 'Autumn Blaze'	Autumn Blaze Freeman Maple	B&B	2" MIN.	10' Min.	4' Min.	---
CC	3	Cercis canadensis	Eastern Redbud	B&B	1.5" MIN.	8' Min.	3' Min.	---
NS	6	Ilex x 'Nellie Stevens'	Nellie Stevens Holly	B&B	---	10' Min.	4' Min.	---
TO	83	Thuja occidentalis 'Emerald'	Emerald Arborvitae	---	---	6' Min.	2' Min.	---
TRM	2	Morelia cerifera	Wax Myrtle	---	1" MIN	6' Min.	2' Min.	Min. 3' Stem TF
ZS	8	Zelkova serrata 'Village Green'	Village Green Zelkova	B&B	2" MIN.	10' Min.	4' Min.	---
SHRUBS								
CG	20	Cyrtomeria japonica 'Glabosa Nana'	Globe Cyrtomeria	3 Gal.	---	30" Min.	24" Min.	---
DM	16	Distylium myricoides 'Linebacker'	Linebacker Distylium	7 Gal.	---	48" Min.	20" Min.	---
JB	35	Distylium myricoides 'Jewel Box'	Jewel Box Distylium	3 Gal.	---	10" Min.	8" Min.	---
MB	6	Thuja occidentalis 'Anna Van Vloten'	Anna's Magla Ball Arborvitae	2 Gal.	---	10" Min.	8" Min.	---
ND	10	Nandina domestica 'Firt'	Firt Nandina	2 Gal.	---	10" Min.	8" Min.	---
ORNAMENTAL GRASSES/PERENNIALS								
DL	35	Hemerocallis 'Stella D'Oro'	Stella D'Oro Daylily	Quart.	---	---	---	---
MS	6	Miscanthus sinensis 'Little Kitten'	Little Kitten Miscanthus	1 Gal.	---	---	---	---
KF	15	Calamagrostis x acutiflora 'Karl Foerster'	Karl Foerster Feather Reed	1 Gal.	---	---	---	---
PA	71	Pennisetum alopecuroides 'Hameln'	Hameln Fountain Grass	1 Gal.	---	---	---	---
LUR	158	Liriope muscari 'Big Blue'	Liriope	4"	---	---	---	---

FINAL DRAWING FOR REVIEW PURPOSES ONLY NOT RELEASED FOR CONSTRUCTION

NO.	DATE	BY	DESCRIPTION

HERITAGE FARM PARK  
**TOWN OF OAK RIDGE**  
 GUILFORD COUNTY, NORTH CAROLINA

LANDSCAPE PLAN - B

SHEET  
**L-102**