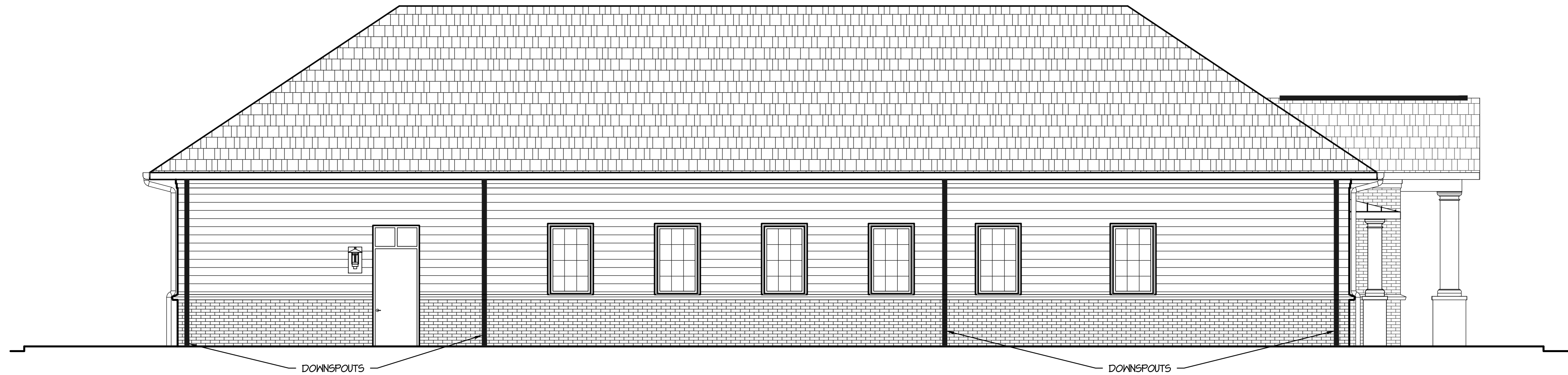
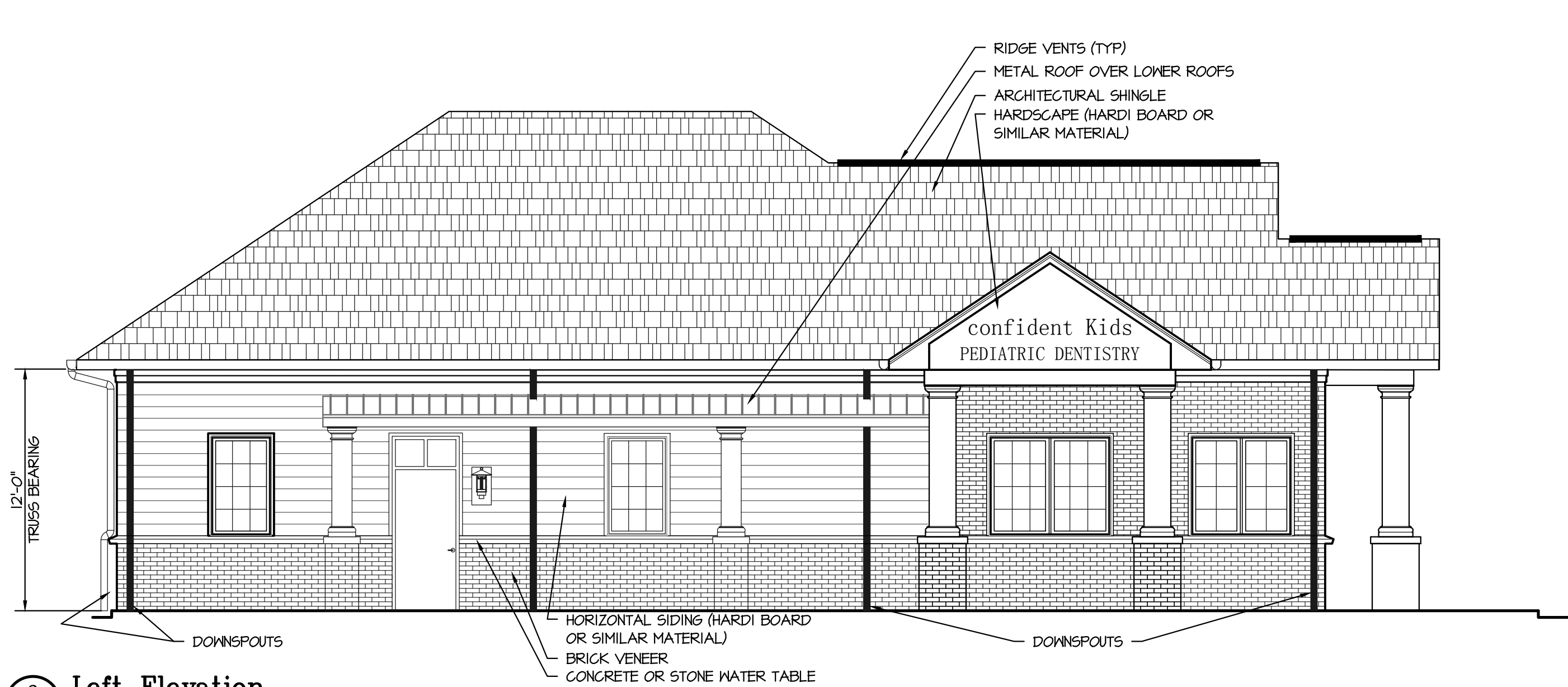


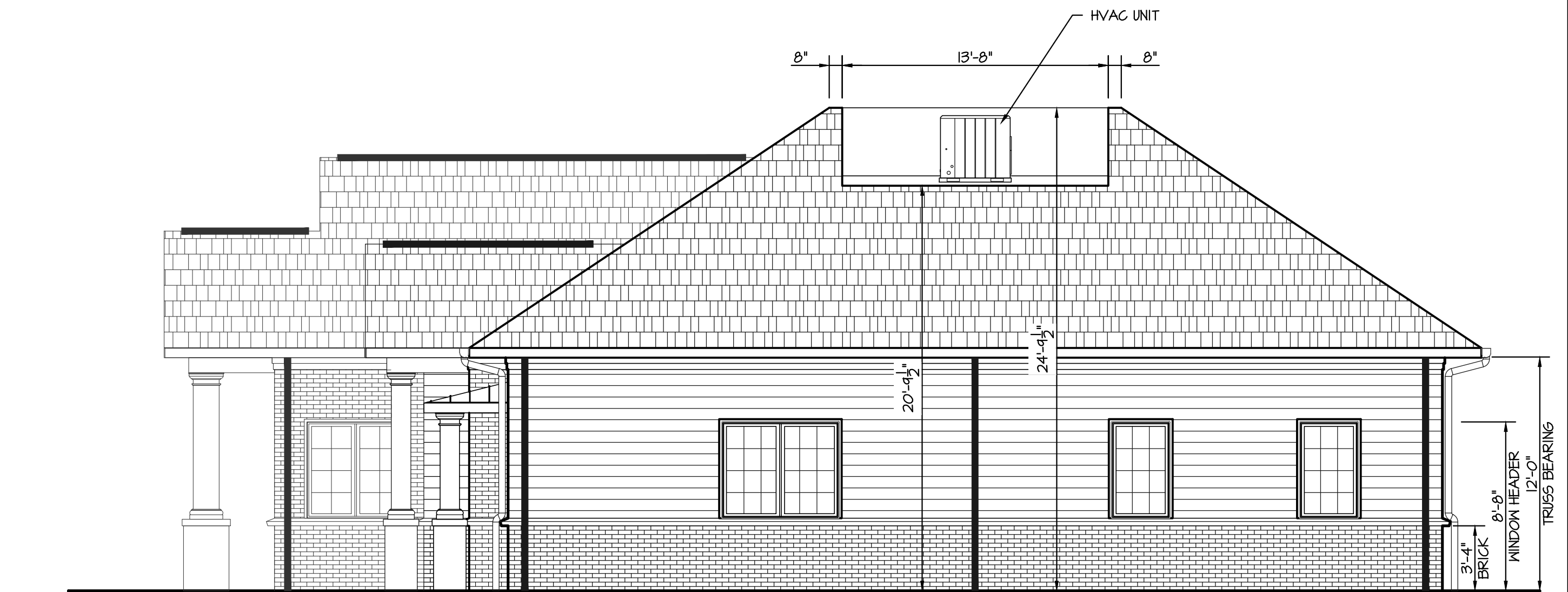
1 Front Elevation  
G1.1 3/16" = 1'-0"



2 Rear Elevation  
G1.1 3/16" = 1'-0"



3 Left Elevation  
G1.1 3/16" = 1'-0"



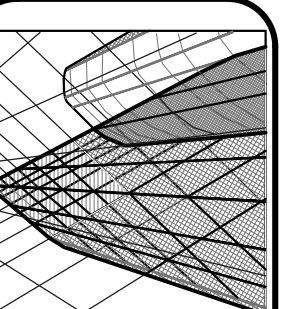
4 Right Elevation  
G1.1 3/16" = 1'-0"

CONFIDENT KIDS PEDIATRIC DENTISTRY

Oak Ridge, NC

EXTERIOR ELEVATIONS

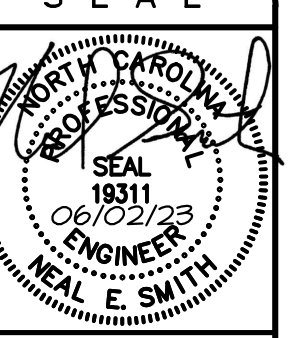
REVISIONS	REVISIONS



Neal Smith Engineering, Inc.  
139 Pinhurst Avenue - Suite C  
Southern Pines, NC 28387  
Phone: (910) 695-8825  
Fax: (910) 695-8832  
www.nseengineering.com  
License No. C-1425



SEAL



PRELIMINARY

Do not use for construction

DRAWN BY: BKB  
DATE: 06/02/23  
JOB NUMBER: 2336403  
DRAWING KEY: G1.1

THIS DRAWING IS THE PROPERTY OF NEAL SMITH ENGINEERING, INC., AND MAY NOT BE REPRODUCED WITHOUT WRITTEN AUTHORIZATION FROM THE ENGINEER. THIS DRAWING IS VOID WITHOUT ORIGINAL SIGNATURE AND SEAL.